

Linear Actuator

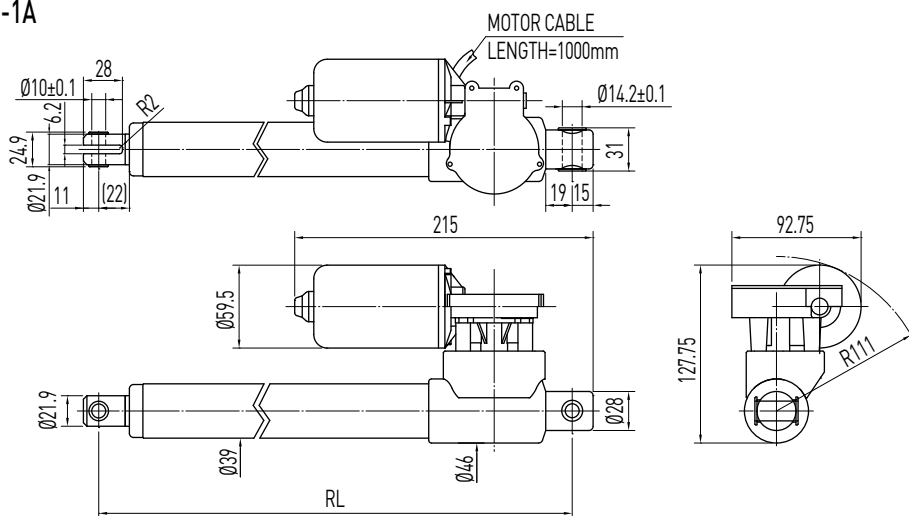
LAI Series

8. HIWIN LAI Series (1)

LAI1

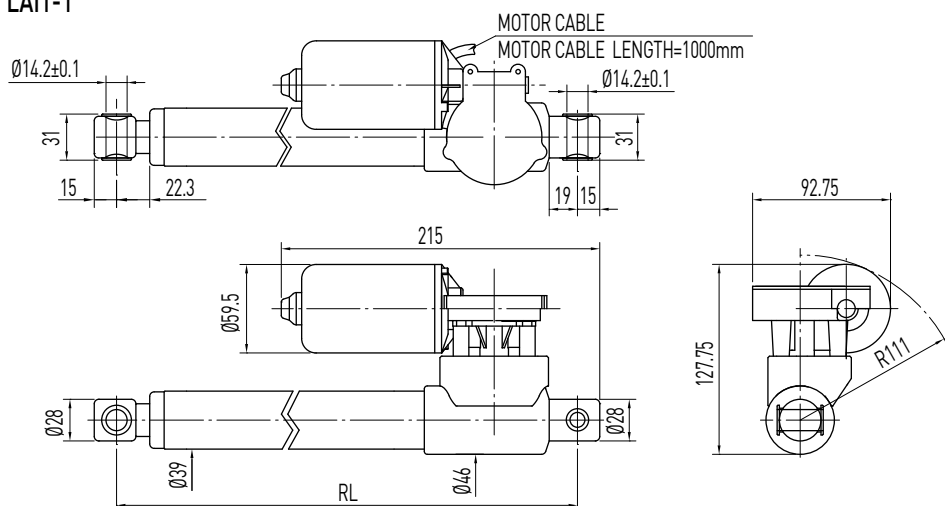


• LAI1-1A



- LAI1-1A
- RL = S+190
- Stroke ≤ 300
- RL = S+240
- Stroke > 300
- RL: Retracted length
- S: Stroke length

• LAI1-1



- LAI1-1
- RL = S+170
- Stroke ≤ 300
- RL = S+220
- Stroke > 300
- RL: Retracted length
- S: Stroke length

Table 8.1 Specifications

Screw type	Ball screw / ACME
Weight*	2.4kg
Protection	IP20
Compatible controller	LAK2 / LAK2LR / LAK2BN / LAK2J / LAK2D / LAK6B
Working temp.	+5°C~40°C

* Stroke length 200mm

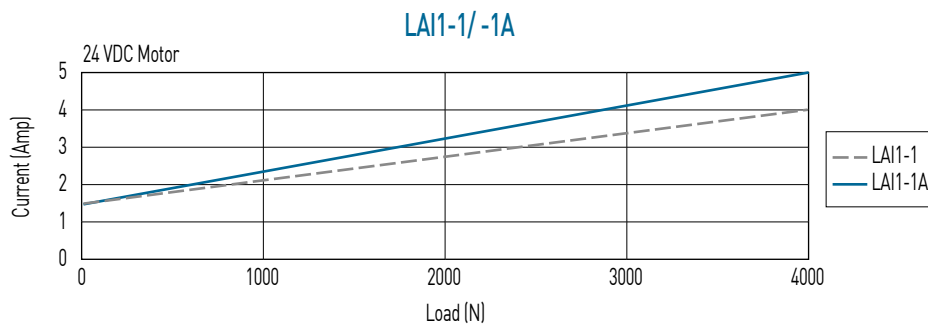
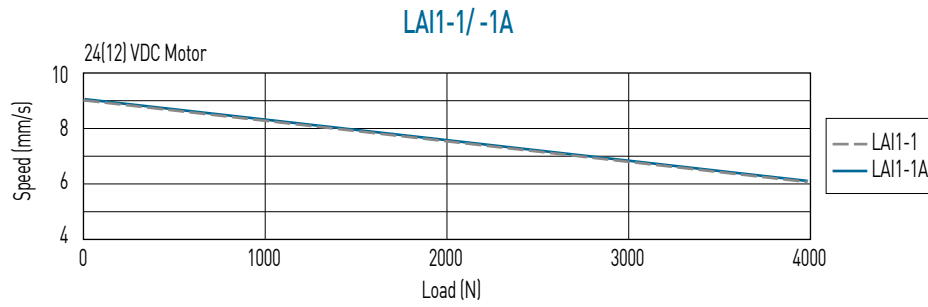
Option:

- (1) IP66
- (2) Hall sensor
- (3) Plug: DIN 4PIN plug / Stereo plug / Mono plug

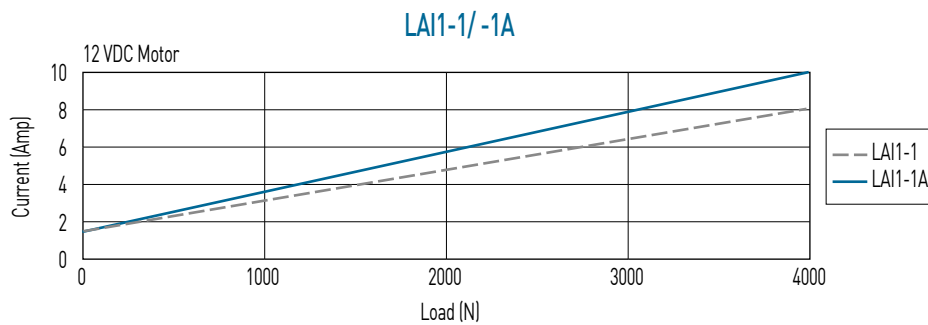
Table 8.2 LAI1 Specifications

Model	Screw type	Thrust max. (N)	Pulling max. (N)	Holding max. (N)	Speed (mm / s) Load = Max. / Load = 0	Standard stroke (mm) : S					Duty cycle %	Current max. (A)	
						100	150	200	250	300		12VDC	24VDC
LAI1-1	Ball screw	4000	4000	1200	6 / 9	100	150	200	250	300	10	8	4
LAI1-1A	ACME	4000	4000	3000	6 / 9	100	150	200	250	300	10	10	5

*Min. input power = Voltage x Current max.



**Note: The test results are obtained by using the 24VDC power supply.



**Note: The test results are obtained by using the 12VDC power supply.

Ordering Information

